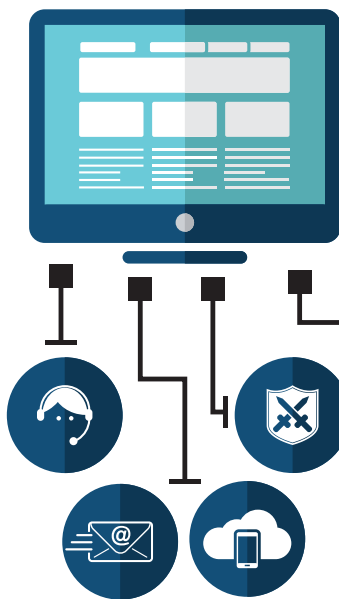


Edge Based Remote Monitoring & Management Network Appliance

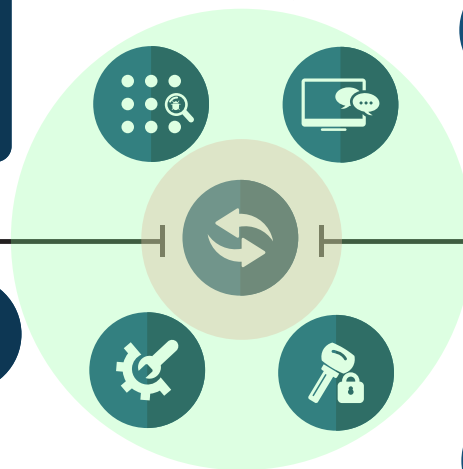
The Sentinel series of products from Obsidian Integration provide ultimate visibility and control of remotely deployed IP systems. It is ideal for wireless video security & surveillance, IoT, kiosks, mobile systems or any unattended network environment. This appliance is installed at the edge as part of the local network and enables complete remote monitoring of all localized assets in a bandwidth friendly manner. The hardware agent speaks with our EdgeRMM system for ongoing health status checks and email or SMS alerts upon any detected issues. The Sentinel gives a local point of connection into the LAN ensuring complete remote control. The unit can be upgraded to add power relays or full out of band management for enhanced system reliability.



Remote Monitoring Dashboard



Remote Control & Management



Edge Based System
Sentinel Hardware Agent



Sentinel Devices

P/N	Description
Sentinel-L	Sentinel Light Monitoring Only
Sentinel-C	Sentinel Complete Monitoring Control
S-Relay	I/O Power Relay Add-on
S-OBM	Out of Band Mgmt Add-on

Sentinel Capabilities & Features

- Automated remote health monitoring of edge devices
- Embedded within remote network for local control
- Out-of-band management Option
- Firmware, Web Interface and Network Inspection Tools
- Advanced system control capabilities for peripherals
- Reporting & Alerting for an array of monitored systems
- Power & environmental data sensor systems
- I/O, Web Based and Power Relay Controls Option
- Phone-Home capability, no network configurations